

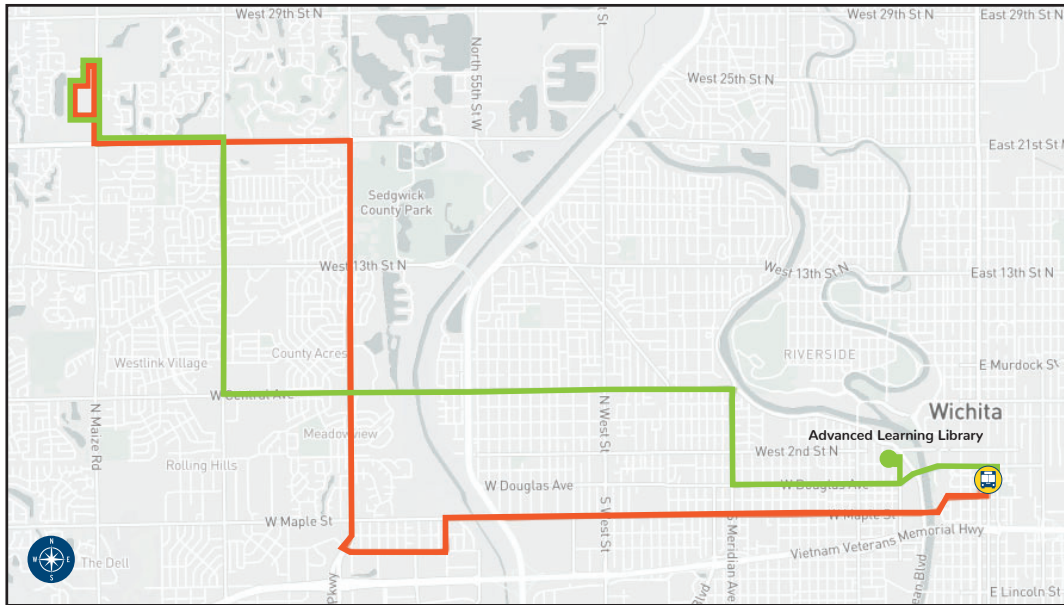


SERVICE ADJUSTMENTS

Effective December 15, 2018

For questions or additional information, please call (316) 265-7221

EFFECTIVE DECEMBER 15, 2018



ROUTES 11 & 12

Routes 11 & 12 will have midday frequency reduced to 60 minutes due to lack of demand during that time.

Route 12 will provide service to the Advanced Learning Library

Routes 11 / 12 will be paired with each other.

Routes 21 / 22 will be paired with each other.

Riders will still be able to ride across town on 11 / 21 or 12 / 22 without paying a new fare even though they will change buses at the Transit Center.

Riders must ask for a golden ride voucher from the driver to use on the next bus. The voucher only works between Routes 11 & 21 or Routes 12 & 22. They do not work between any other routes.



EFFECTIVE DECEMBER 15, 2018

ROUTE 13

Route 13 will leave the Transit Center at the same time as other buses.

Route 13 will begin serving the north industrial park every trip and will arrive at :10 after the hour all day and :40 after the hour during peak hours.

The express service to this area via Route 28 will be discontinued.

This new service provides all day service to the area, increasing from 3 trips per day.



- New Service
- Removed Service

EFFECTIVE DECEMBER 15, 2018

ROUTE 14

Route 14 will serve Greenway Manor

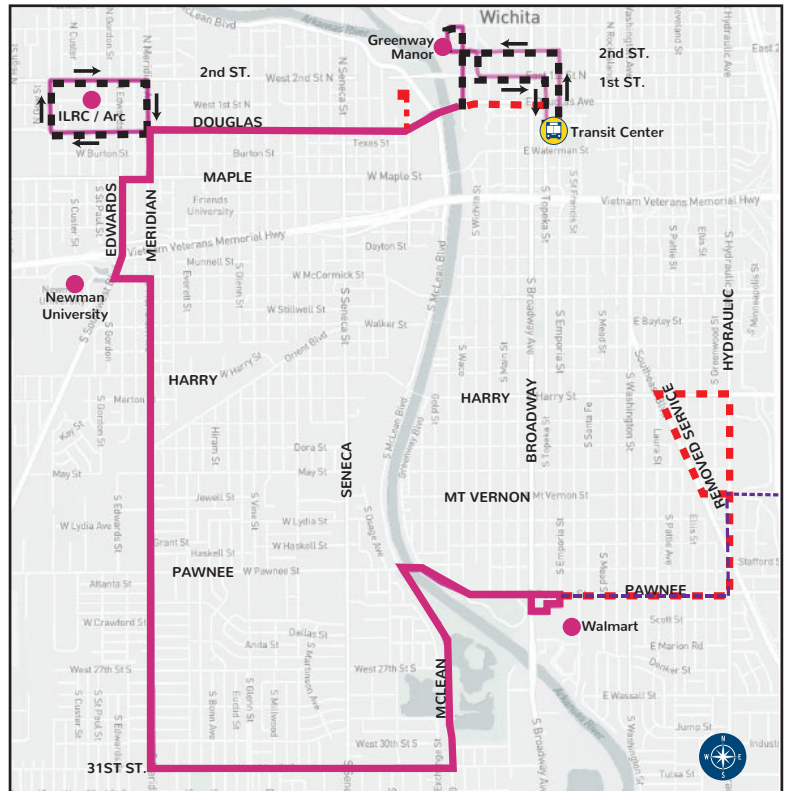
Route 14 will begin serving the Independent Living Resource Center and Arc of Sedgwick County both inbound and outbound, every trip.

Route 14 will no longer provide service east of Pawnee Walmart stop. The area will be covered by new Route 23 adjustments.

Direct service to the Advanced Learning Library is changing to Route 12.

Route 14 will operate every 45 minutes all day.

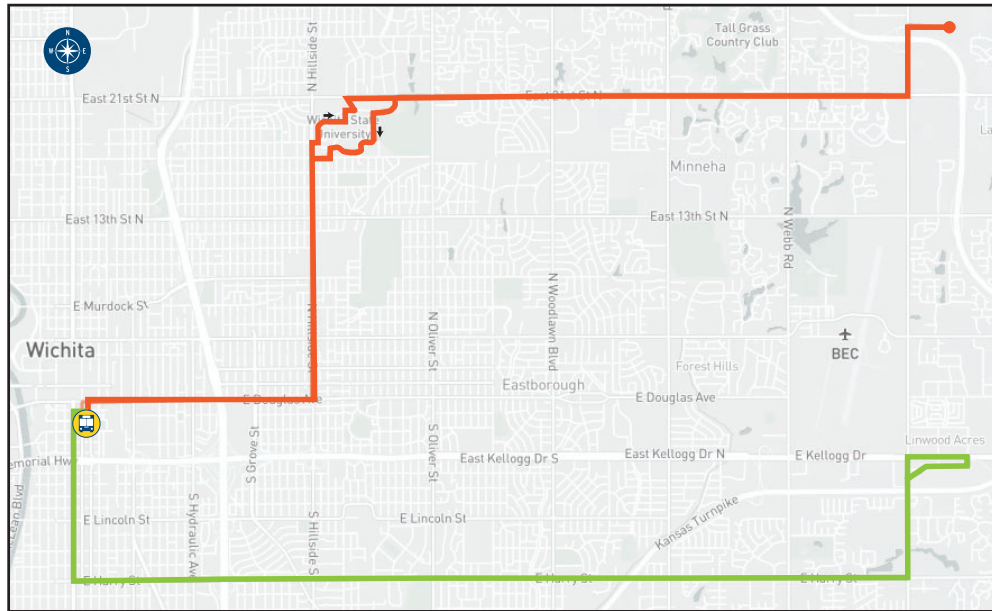
Service to Newman University is available by request to the driver.



- New Service
- Removed Service



EFFECTIVE DECEMBER 15, 2018



ROUTES 21 & 22

Due to frequency changes on routes 11 & 12, route pairing will change on routes 21 & 22.

Routes 21 / 22 will be paired with each other.
Routes 11 / 12 will be paired with each other.

Routes 21 & 22 will continue to have 30 minute, all day frequency.

Riders will still be able to ride across town on 11 / 21 or 12 / 22 without paying a new fare even though they will change buses at the Transit Center.

Riders must ask for a golden ride voucher from the driver to use on the next bus. The voucher only works between Routes 11 & 21 or Routes 12 & 22. They do not work between any other routes.



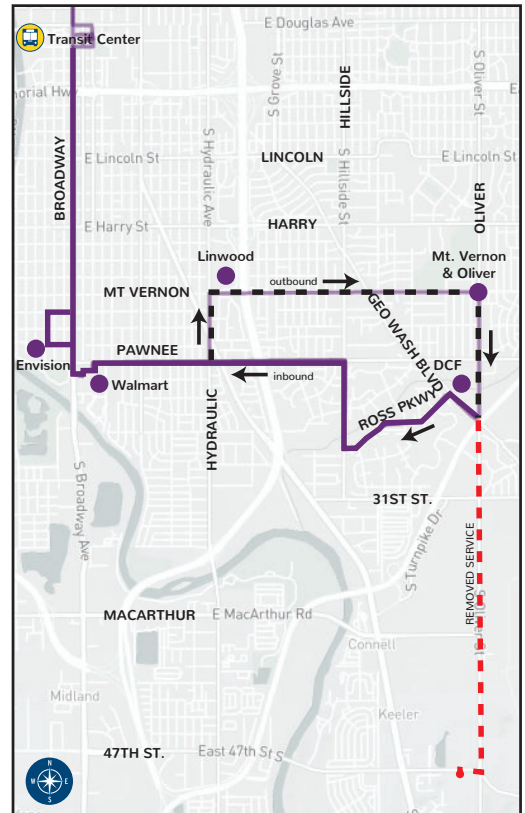
ROUTE 23

Route 23 outbound will travel on Hydraulic, Mt. Vernon and Oliver to Dept. for Children and Families.

Bus Service to 47th and Oliver will be removed.

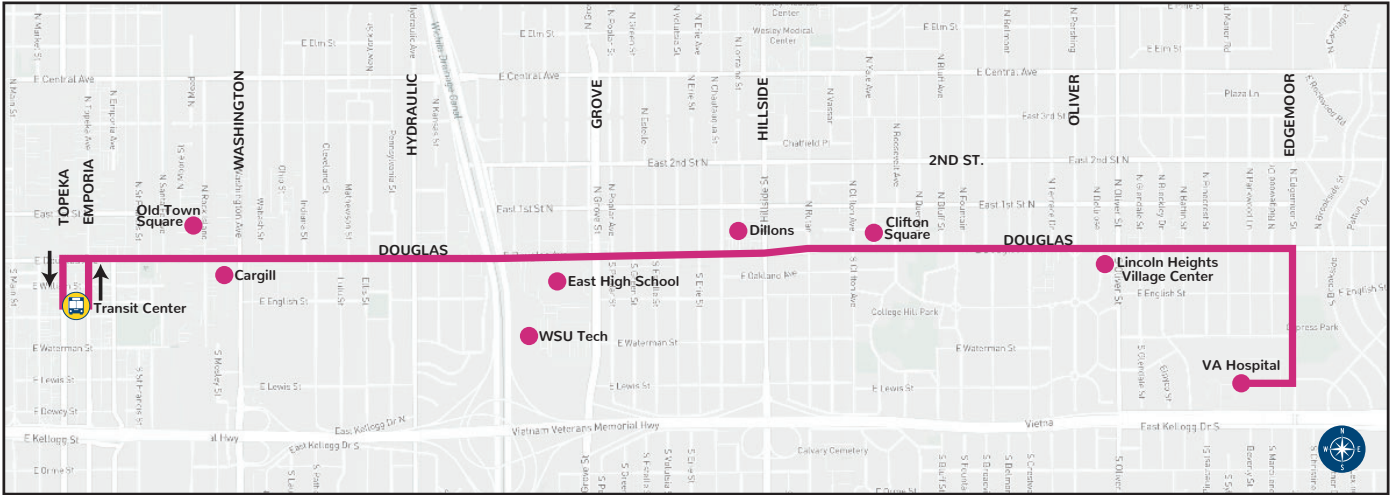
New service will be added to serve south Oliver St. to include the area between Mt. Vernon and Pawnee.

Route 23 will continue to serve Envision at current select times of the day.



- New Service
- Removed Service

EFFECTIVE DECEMBER 15, 2018



ROUTE 24

Route 24 will operate independently of Route 14.

Service will run from the Transit Center to the VA Hospital every 45 minutes from 5:30 am to 6:45 pm.

Route 24 will not operate on Saturdays.

Saturday service on east Douglas will be covered by the new weekend Q-LINE. Service will not be offered to the VA Hospital on Saturdays.

